

0.50mm VERTICAL SMT ZIF CONNECTOR



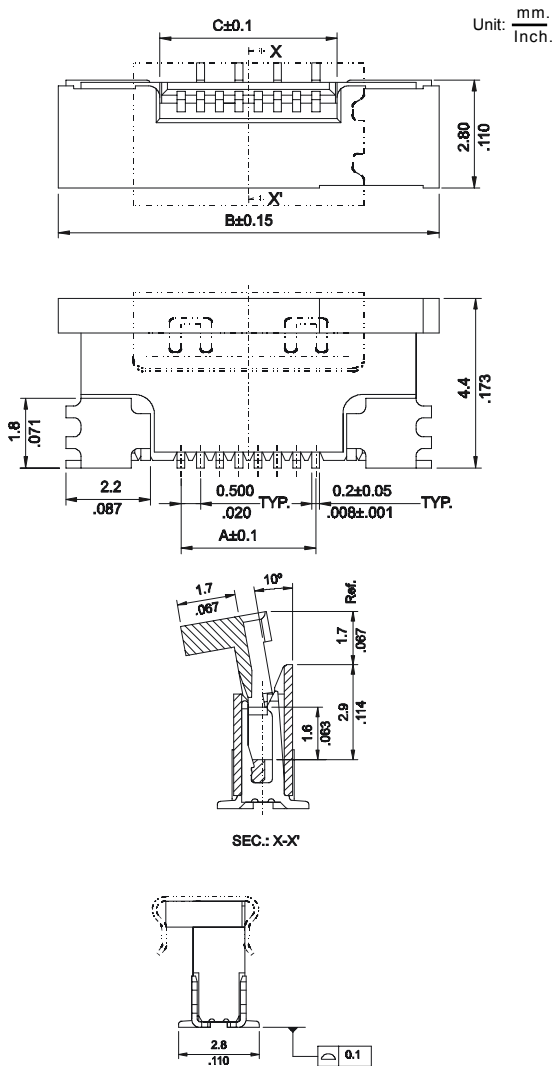
0510 SERIES. 0.50mm(0.020"). For PCB Solder. Vertical Type

Features

- Available in 4 through 50 circuits
- Insulator Material: High temperature plastic UL 94V-0
- Tin-lead plated Phosphor Bronze Vertical Type
- Actuator designed easy for FFC / FPC installation
- With fixed metal tabs to secure connector in place
- Available in Tube or Reel packing

Dimensional Information

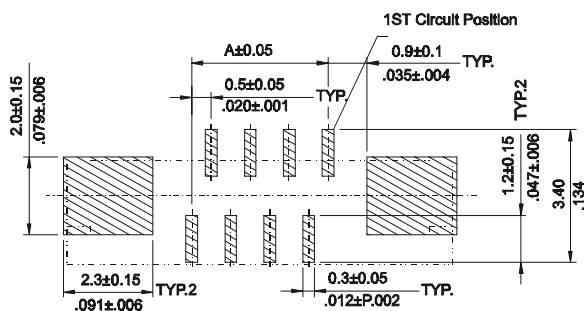
Ordering and Dimensional Information



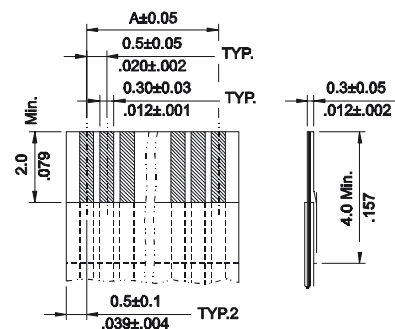
Circuit Size	Part Number	Dimensions		
		A	B	C
04	0510-T041	1,50(0,059)	7,90(0,311)	4,10(0,161)
05	0510-T051	2,00(0,079)	8,40(0,331)	5,10(0,201)
06	0510-T061	2,50(0,098)	8,90(0,350)	6,10(0,240)
07	0510-T071	3,00(0,118)	9,40(0,370)	7,10(0,280)
08	0510-T081	3,50(0,138)	9,90(0,390)	8,10(0,319)
09	0510-T091	4,00(0,157)	10,40(0,409)	9,10(0,358)
10	0510-T101	4,50(0,177)	10,90(0,429)	10,10(0,398)
11	0510-T111	5,00(0,197)	11,40(0,449)	11,10(0,437)
12	0510-T121	5,50(0,217)	11,90(0,469)	12,10(0,476)
13	0510-T131	6,00(0,236)	12,40(0,488)	13,10(0,516)
14	0510-T141	6,50(0,256)	12,90(0,508)	14,10(0,555)
15	0510-T151	7,00(0,276)	13,40(0,528)	15,10(0,594)
16	0510-T161	7,50(0,295)	13,90(0,547)	16,10(0,634)
17	0510-T171	8,00(0,315)	14,40(0,567)	17,10(0,673)
18	0510-T181	8,50(0,335)	14,90(0,587)	18,10(0,713)
19	0510-T191	9,00(0,354)	15,40(0,606)	19,10(0,752)
20	0510-T201	9,50(0,374)	15,90(0,626)	20,10(0,791)
21	0510-T211	10,00(0,394)	16,40(0,646)	21,10(0,831)
22	0510-T221	10,50(0,413)	16,90(0,665)	22,10(0,870)
23	0510-T231	11,00(0,433)	17,40(0,685)	23,10(0,909)
24	0510-T241	11,50(0,453)	17,90(0,705)	24,10(0,949)
25	0510-T251	12,00(0,472)	18,40(0,724)	25,10(0,988)
26	0510-T261	12,50(0,492)	18,90(0,744)	26,10(1,028)
27	0510-T271	13,00(0,512)	19,40(0,764)	27,10(1,067)
28	0510-T281	13,50(0,531)	19,90(0,783)	28,10(1,106)
29	0510-T291	14,00(0,551)	20,40(0,803)	29,10(1,146)
30	0510-T301	14,50(0,571)	20,90(0,823)	30,10(1,185)
31	0510-T311	15,00(0,591)	21,40(0,843)	31,10(1,224)
32	0510-T321	15,50(0,610)	21,90(0,862)	32,10(1,264)
33	0510-T331	16,00(0,630)	22,40(0,882)	33,10(1,303)
34	0510-T341	16,50(0,650)	22,90(0,902)	34,10(1,343)
35	0510-T351	17,00(0,669)	23,40(0,921)	35,10(1,382)
36	0510-T361	17,50(0,689)	23,90(0,941)	36,10(1,421)
37	0510-T371	18,00(0,709)	24,40(0,961)	37,10(1,461)
38	0510-T381	18,50(0,728)	24,90(0,980)	38,10(1,500)
39	0510-T391	19,00(0,748)	25,40(1,000)	39,10(1,539)
40	0510-T401	19,50(0,768)	25,90(1,020)	40,10(1,579)
41	0510-T411	20,00(0,787)	26,40(1,039)	41,10(1,618)
42	0510-T421	20,50(0,807)	26,90(1,059)	42,10(1,657)
43	0510-T431	21,00(0,827)	27,40(1,079)	43,10(1,697)
44	0510-T441	21,50(0,846)	27,90(1,098)	44,10(1,736)
45	0510-T451	22,00(0,866)	28,40(1,118)	45,10(1,776)
46	0510-T461	22,50(0,886)	28,90(1,138)	46,10(1,815)
47	0510-T471	23,00(0,906)	29,40(1,157)	47,10(1,854)
48	0510-T481	23,50(0,925)	29,90(1,177)	48,10(1,894)
49	0510-T491	24,00(0,945)	30,40(1,197)	49,10(1,933)
50	0510-T501	24,50(0,965)	30,90(1,217)	50,10(1,972)

Notice: In case of connectors in reel (Automatic mounting), add an R at the end of code.

Solder Pad Pattern



Accommodated FFC/FPC



0.50mm VERTICAL SMT ZIF CONNECTOR

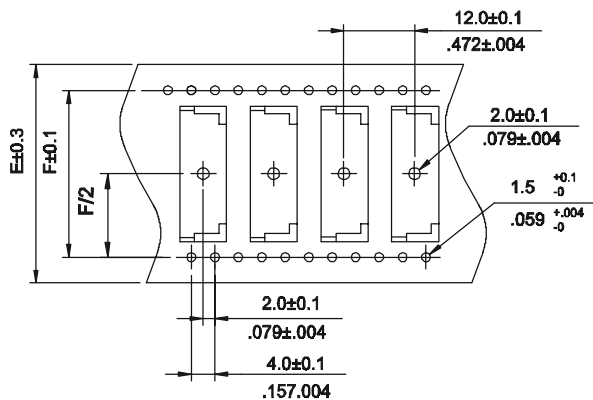
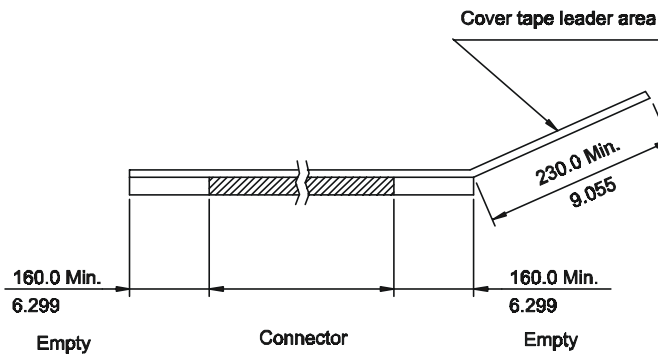
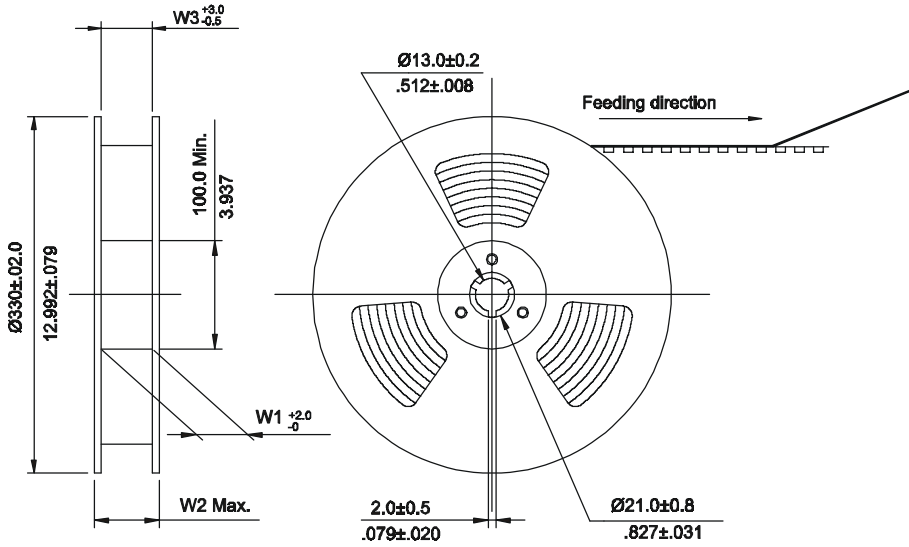


0510 SERIES. For Machine Mounting

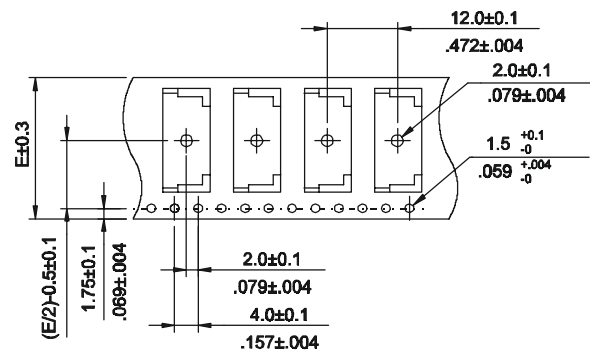
Features

- Reel packing

Circuit Size	Dimensions				
	E	F	W1	W2	W3
6-22	24.0 (0.945)	-	24.50 (0.965)	30.50 (1.200)	24.50 (0.965)
23-32	32.0 (1.260)	28.40 (1.118)	32.50 (1.280)	38.50 (1.516)	32.50 (1.280)
33-50	44.0 (1.732)	40.40 (1.596)	44.50 (1.752)	50.50 (1.988)	44.50 (1.752)



WIDTH : 32,44 mm. Carrier



WIDTH : 24 mm. Carrier