

# HAND CRIMP TOOL



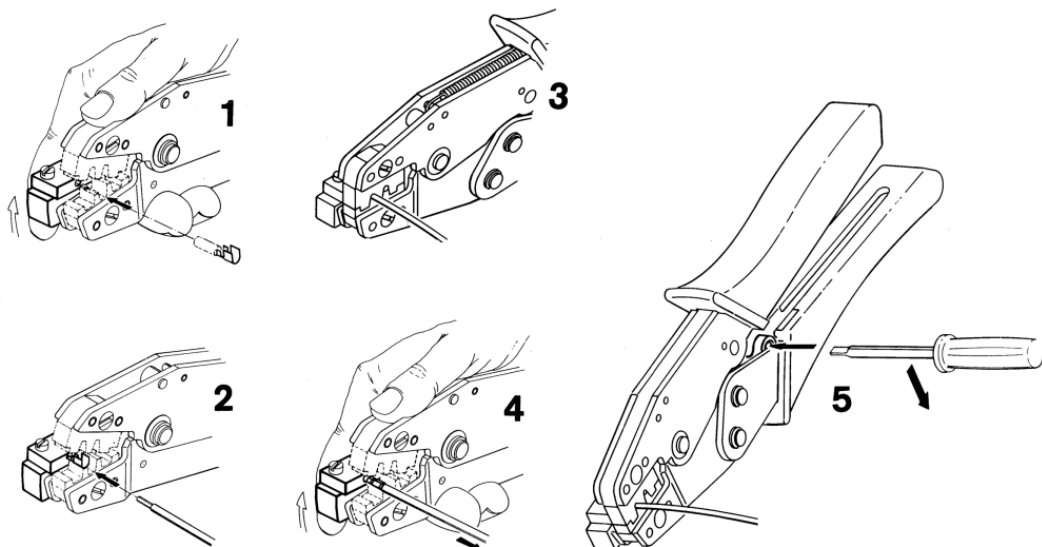
## 1190 SERIES. For Loose Terminals

### Features

- Compact and light weight
- Regular crimping pressure
- Crimping cycle control system
- Ideal for crimping prototypes and low level of production
- Different wire size and slots

Part Number:

1190-XXXX



# HAND CRIMP TOOL



## 1190 SERIES. For Loose Terminals

### Stripping Dimensions and Part Number

Terminal Series	AWG	Stripping (mm)		Part Number
		Minimum	Maximum	
1003	22 - 28	2.20 (0.087)	2.80 (0.110)	1190 - 1298
1083	18 - 24	4.00 (0.157)	5.00 (0.197)	1190 - 1298
1143	18 - 28	4.00 (0.157)	5.00 (0.197)	1190 - 1298
1628	18 - 22	4.00 (0.157)	5.00 (0.197)	1190 - 1309
1631	12 - 22	According To Terminal		1190 - 1250
1649	22 - 28	4.00 (0.157)	5.00 (0.197)	1190 - 1298
1663	14 - 22	5.00 (0.197)	6.00 (0.236)	1190 - 1300
2010	24 - 30	1.75 (0.069)	2.20 (0.087)	1190 - 1325
2014	22 - 28	2.30 (0.091)	2.70 (0.106)	1190 - 1298
2044	22 - 28	2.60 (0.102)	3.20 (0.126)	1190 - 1298
2200	24 - 30	2.30 (0.091)	2.80 (0.110)	1190 - 1298
2500	22 - 28	2.00 (0.079)	2.50 (0.098)	1190 - 1298
2513	22 - 28	2.00 (0.079)	2.50 (0.098)	1190 - 1298
2523	22 - 28	2.25 (0.089)	2.75 (0.108)	1190 - 1298
2540	22 - 28	2.20 (0.087)	2.80 (0.110)	1190 - 1298
2613	14 - 20	3.20 (0.126)	3.80 (0.150)	1190 - 1298
2653	22 - 28	3.20 (0.126)	3.80 (0.150)	1190 - 1298
2654	26 - 32	3.20 (0.126)	3.80 (0.150)	1190 - 1298
3032	18-22	2.50 (0.098)	3.50 (0.138)	1190 - 1298
3060	18 - 24	2.50 (0.098)	3.50 (0.138)	1190 - 1298
3079	18 - 24	2.50 (0.098)	3.50 (0.138)	1190 - 1298
3979	18 - 26	2.50 (0.098)	3.50 (0.138)	1190 - 1298
3953	18 - 22	2.80 (0.110)	3.50 (0.138)	1190 - 1312
4501	24 - 28	4.50 (0.177)	5.00 (0.197)	-
4502	22 - 24	4.50 (0.177)	5.00 (0.197)	-
4503	18 - 24	4.50 (0.177)	5.00 (0.197)	-
4801	14 - 16	3.00 (0.118)	4.00 (0.157)	1190 - 1298
4802	14 - 16	3.00 (0.118)	4.00 (0.157)	1190 - 1298
4803	18 - 24	3.00 (0.118)	4.00 (0.157)	1190 - 1298
4804	18 - 24	3.00 (0.118)	4.00 (0.157)	1190 - 1298
5031	18 - 24	4.00 (0.157)	5.00 (0.197)	1190 - 1312
5032	18 - 24	4.00 (0.157)	5.00 (0.197)	1190 - 1312
6701	14 - 20	4.00 (0.157)	5.00 (0.197)	1190 - 1312
6702	14 - 20	4.00 (0.157)	5.00 (0.197)	1190 - 1312
6703	18 - 24	4.00 (0.157)	5.00 (0.197)	1190 - 1312
6704	18 - 24	4.00 (0.157)	5.00 (0.197)	1190 - 1312
6721	14 - 20	4.00 (0.157)	5.00 (0.197)	1190 - 1312
6722	14 - 20	4.00 (0.157)	5.00 (0.197)	1190 - 1312
6723	18 - 22	4.00 (0.157)	5.00 (0.197)	1190 - 1312
6724	18 - 22	4.00 (0.157)	5.00 (0.197)	1190 - 1312
6731	18 - 22	3.00 (0.118)	4.00 (0.157)	1190 - 1298
6732	18 - 22	3.00 (0.118)	4.00 (0.157)	1190 - 1298
6733	24 - 30	3.00 (0.118)	4.00 (0.157)	1190 - 1298
6734	24 - 30	3.00 (0.118)	4.00 (0.157)	1190 - 1298
6741	22 - 26	2.50 (0.098)	3.50 (0.138)	1190 - 1298
6742	22 - 26	2.50 (0.098)	3.50 (0.138)	1190 - 1298
6743	16 - 20	2.50 (0.098)	3.50 (0.138)	1190 - 1298
6744	16 - 20	2.50 (0.098)	3.50 (0.138)	1190 - 1298
7553	18 - 24	4.00 (0.157)	5.00 (0.197)	1190 - 1298
8501	24 - 28	2.20 (0.087)	2.80 (0.110)	1190 - 1325
8502	24 - 28	2.20 (0.087)	2.80 (0.110)	1190 - 1325
8503	22 - 26	2.20 (0.087)	2.80 (0.110)	1190 - 1325
8504	22 - 26	2.20 (0.087)	2.80 (0.110)	1190 - 1325
8510	24 - 28	3.00 (0.118)	3.50 (0.138)	1190 - 1353
8511	24 - 28	3.00 (0.118)	3.50 (0.138)	1190 - 1353