

DUAL ROW STRAIGHT HEADER SMT



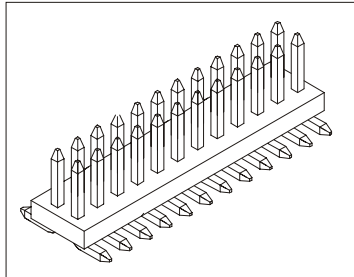
1363 SERIES. 1.27 x 1.27mm(0.050 x 0.050"). With Fixing Post. SMT

Features

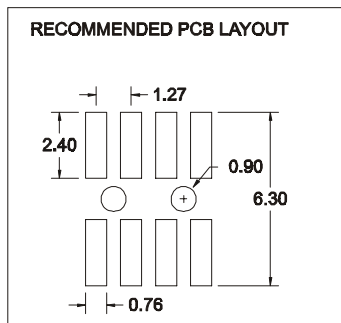
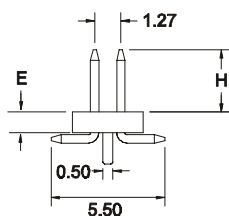
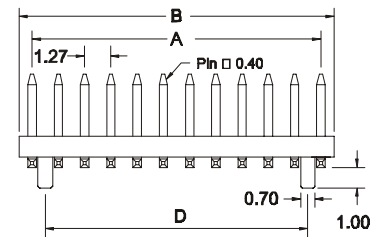
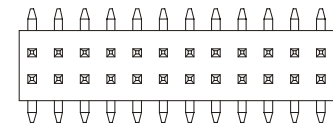
- Available in 10 through 100 circuits
- Mates with 1.27mm(.050") dual row housing and socket
- Insulator Material: Nylon 6T
- 0.40mm square pin in copper alloy
- Pin length and plating options are available
- For other options consult the Sales Office

Dimensional Information

Ordering and Dimensional Information



Unit: $\frac{\text{mm.}}{\text{Inch.}}$



C = Pin Length

- C = 1. H = 3.00mm

Circuit Size	Part Number			Dimensions		
	E = 1 mm	E = 1.50 mm	E = 2.00 mm	A	B	D
10	1363-T101C	1363-T102C	1363-T103C	5,08(0,200)	6,35(0,250)	3,81(0,150)
12	1363-T121C	1363-T122C	1363-T123C	6,35(0,250)	7,62(0,300)	5,08(0,200)
14	1363-T141C	1363-T142C	1363-T143C	7,62(0,300)	8,89(0,350)	6,35(0,250)
16	1363-T161C	1363-T162C	1363-T163C	8,89(0,350)	10,16(0,400)	7,62(0,300)
18	1363-T181C	1363-T182C	1363-T183C	10,16(0,400)	11,43(0,450)	8,89(0,350)
20	1363-T201C	1363-T202C	1363-T203C	11,43(0,450)	12,70(0,500)	10,16(0,400)
22	1363-T221C	1363-T222C	1363-T223C	12,70(0,500)	13,97(0,550)	11,43(0,450)
24	1363-T241C	1363-T242C	1363-T243C	13,97(0,550)	15,24(0,600)	12,70(0,500)
26	1363-T261C	1363-T262C	1363-T263C	15,24(0,600)	16,51(0,650)	13,97(0,550)
28	1363-T281C	1363-T282C	1363-T283C	16,51(0,650)	17,78(0,700)	15,24(0,600)
30	1363-T301C	1363-T302C	1363-T303C	17,78(0,700)	19,05(0,750)	16,51(0,650)
32	1363-T321C	1363-T322C	1363-T323C	19,05(0,750)	20,32(0,800)	17,78(0,700)
34	1363-T341C	1363-T342C	1363-T343C	20,32(0,800)	21,59(0,850)	19,05(0,750)
36	1363-T361C	1363-T362C	1363-T363C	21,59(0,850)	22,86(0,900)	20,32(0,800)
38	1363-T381C	1363-T382C	1363-T383C	22,86(0,900)	24,13(0,950)	21,59(0,850)
40	1363-T401C	1363-T402C	1363-T403C	24,13(0,950)	25,40(1,000)	22,86(0,900)
42	1363-T421C	1363-T422C	1363-T423C	25,40(1,000)	26,67(1,050)	24,13(0,950)
44	1363-T441C	1363-T442C	1363-T443C	26,67(1,050)	27,94(1,100)	25,40(1,000)
46	1363-T461C	1363-T462C	1363-T463C	27,94(1,100)	29,21(1,150)	26,67(1,050)
48	1363-T481C	1363-T482C	1363-T483C	29,21(1,150)	30,48(1,200)	27,94(1,100)
50	1363-T501C	1363-T502C	1363-T503C	30,48(1,200)	31,75(1,250)	29,21(1,150)
52	1363-T521C	1363-T522C	1363-T523C	31,75(1,250)	33,02(1,300)	30,48(1,200)
54	1363-T541C	1363-T542C	1363-T543C	33,02(1,300)	34,29(1,350)	31,75(1,250)
56	1363-T561C	1363-T562C	1363-T563C	34,29(1,350)	35,56(1,400)	33,02(1,300)
58	1363-T581C	1363-T582C	1363-T583C	35,56(1,400)	36,83(1,450)	34,29(1,350)
60	1363-T601C	1363-T602C	1363-T603C	36,83(1,450)	38,10(1,500)	35,56(1,400)
62	1363-T621C	1363-T622C	1363-T623C	38,10(1,500)	39,37(1,550)	36,83(1,450)
64	1363-T641C	1363-T642C	1363-T643C	39,37(1,550)	40,64(1,600)	38,10(1,500)
66	1363-T661C	1363-T662C	1363-T663C	40,64(1,600)	41,91(1,650)	39,37(1,550)
68	1363-T681C	1363-T682C	1363-T683C	41,91(1,650)	43,18(1,700)	40,64(1,600)
70	1363-T701C	1363-T702C	1363-T703C	43,18(1,700)	44,45(1,750)	41,91(1,650)
72	1363-T721C	1363-T722C	1363-T723C	44,45(1,750)	45,72(1,800)	43,18(1,700)
74	1363-T741C	1363-T742C	1363-T743C	45,72(1,800)	46,99(1,850)	44,45(1,750)
76	1363-T761C	1363-T762C	1363-T763C	46,99(1,850)	48,26(1,900)	45,72(1,800)
78	1363-T781C	1363-T782C	1363-T783C	48,26(1,900)	49,53(1,950)	46,99(1,850)
80	1363-T801C	1363-T802C	1363-T803C	49,53(1,950)	50,80(2,000)	48,26(1,900)
82	1363-T821C	1363-T822C	1363-T823C	50,80(2,000)	52,07(2,050)	49,53(1,950)
84	1363-T841C	1363-T842C	1363-T843C	52,07(2,050)	53,34(2,100)	50,80(2,000)
86	1363-T861C	1363-T862C	1363-T863C	53,34(2,100)	54,61(2,150)	52,07(2,050)
88	1363-T881C	1363-T882C	1363-T883C	54,61(2,150)	55,88(2,200)	53,34(2,100)
90	1363-T901C	1363-T902C	1363-T903C	55,88(2,200)	57,15(2,250)	54,61(2,150)
92	1363-T921C	1363-T922C	1363-T923C	57,15(2,250)	58,42(2,300)	55,88(2,200)
94	1363-T941C	1363-T942C	1363-T943C	58,42(2,300)	59,69(2,350)	57,15(2,250)
96	1363-T961C	1363-T962C	1363-T963C	59,69(2,350)	60,96(2,400)	58,42(2,300)
98	1363-T981C	1363-T982C	1363-T983C	60,96(2,400)	62,23(2,450)	59,69(2,350)
100	1363-T001C	1363-T002C	1363-T003C	62,23(2,450)	63,50(2,500)	60,96(2,400)

T = Contact Plating

- T = 2. Tin plated
- T = 3. Gold flash over 50μ" nickel

Recommended Finish

- T = 5. 15μ" gold over 50μ" nickel
- T = 6. 30μ" gold over 50μ" nickel
- T = 13. Selective gold flash over 50μ" nickel
- T = 15. 15μ" selective gold over 50μ" nickel
- T = 16. 30μ" selective gold over 50μ" nickel