

MALE STRAIGHT POLARISED HEADER SMT

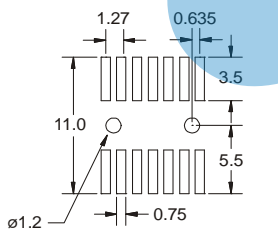
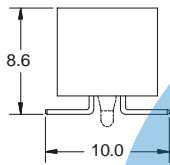
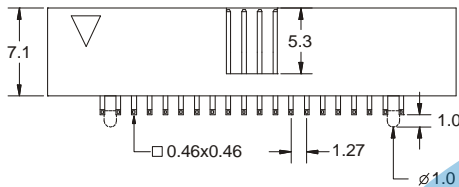
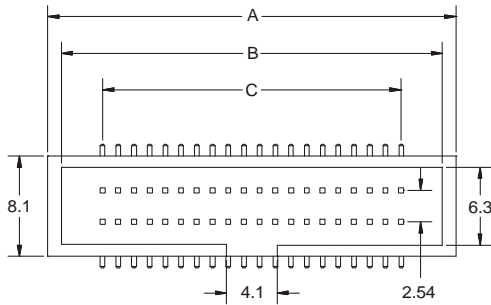


1542 SERIE. 1.27 x 2.54 mm. (0.050 x 0.100"). Low profile

Features

- Available in 10, 14, 16, 20, 26, 30, 34, 40, 50, 60, 68, 70, 80, 90 and 100 circuits
- Mates with female header 1541
- 0.46 mm square pin in phosphor bronze
- Gold and phosphor bronze with different plating
- Insulator material: Nylon 6T UL 94V-0
- Completely polarised
- Length over PCB 8.6 mm.

Dimensional information:



RECOMMENDED PCB LAYOUT

Ordering and dimensional information:

Circuit Size	Part Number	Dimensions		
		A	B	C
10	1542 - T010	13.95 (0.549)	11.55 (0.455)	5.08 (0.200)
14	1542 - T014	16.49 (0.649)	14.29 (0.562)	7.62 (0.300)
16	1542 - T016	17.76 (0.699)	15.36 (0.605)	8.89 (0.350)
20	1542 - T020	20.30 (0.800)	17.90 (0.706)	11.43 (0.450)
26	1542 - T026	24.11 (0.949)	21.71 (0.855)	15.24 (0.600)
30	1542 - T030	26.65 (1.049)	24.25 (0.955)	17.78 (0.700)
34	1542 - T034	29.19 (1.149)	26.79 (1.055)	20.32 (0.800)
40	1542 - T040	33.00 (1.299)	30.60 (1.205)	24.13 (0.950)
50	1542 - T050	39.35 (1.549)	36.95 (1.455)	30.48 (1.200)
60	1542 - T060	45.70 (1.799)	43.30 (1.705)	36.83 (1.450)
68	1542 - T068	50.78 (1.999)	48.38 (1.905)	41.91 (1.650)
70	1542 - T070	52.05 (2.049)	49.65 (1.955)	43.18 (1.700)
80	1542 - T080	58.40 (2.299)	56.00 (2.205)	49.53 (1.950)
90	1542 - T090	64.75 (2.549)	62.35 (2.455)	55.88 (2.200)
100	1542 - T100	71.10 (2.799)	68.70 (2.705)	62.23 (2.450)

T = Contact Plating

- T = 2. Tin plated.
- T = 3. Gold flash over 50µ" nickel
Recommended Finish
- T = 5. 15µ" gold over 50µ" nickel
- T = 6. 30µ" gold over 50µ" nickel

