

# SINGLE ROW CRIMP TYPE SOCKET



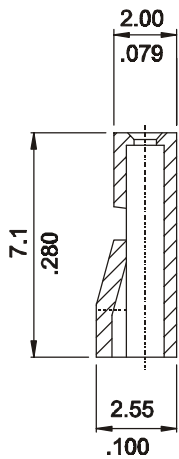
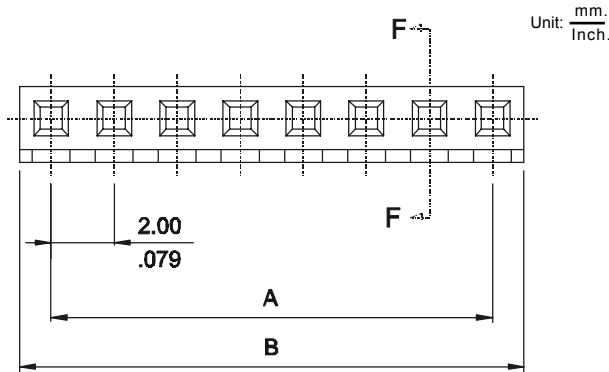
## 2065 SERIES. 2.00mm(0.079"). Crimp Type Socket

### Features

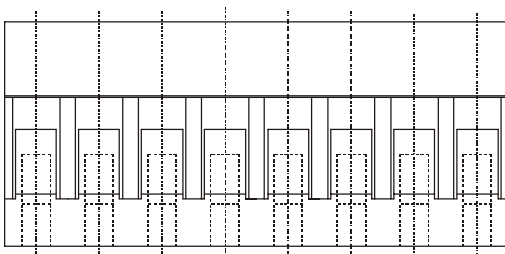
- Available in 2 through 30 circuits
- Material: Glass filled polyester UL 94V-0
- Accepts 2066 crimp terminal
- Mates with 2.00mm(.079") single row headers with 0.50mm square pin
- Low profile

### Dimensional Information

### Ordering and Dimensional Information



SEC. F-F



Circuit Size	Part Number	Dimensions	
		A	B
02	2065-2021	2,00(0,079)	4,00(0,157)
03	2065-2031	4,00(0,157)	6,00(0,236)
04	2065-2041	6,00(0,236)	8,00(0,315)
05	2065-2051	8,00(0,315)	10,00(0,394)
06	2065-2061	10,00(0,394)	12,00(0,472)
07	2065-2071	12,00(0,472)	14,00(0,551)
08	2065-2081	14,00(0,551)	16,00(0,630)
09	2065-2091	16,00(0,630)	18,00(0,709)
10	2065-2101	18,00(0,709)	20,00(0,787)
11	2065-2111	20,00(0,787)	22,00(0,866)
12	2065-2121	22,00(0,866)	24,00(0,945)
13	2065-2131	24,00(0,945)	26,00(1,024)
14	2065-2141	26,00(1,024)	28,00(1,102)
15	2065-2151	28,00(1,102)	30,00(1,181)
16	2065-2161	30,00(1,181)	32,00(1,260)
17	2065-2171	32,00(1,260)	34,00(1,339)
18	2065-2181	34,00(1,339)	36,00(1,417)
19	2065-2191	36,00(1,417)	38,00(1,496)
20	2065-2201	38,00(1,496)	40,00(1,575)
21	2065-2211	40,00(1,575)	42,00(1,654)
22	2065-2221	42,00(1,654)	44,00(1,732)
23	2065-2231	44,00(1,732)	46,00(1,811)
24	2065-2241	46,00(1,811)	48,00(1,890)
25	2065-2251	48,00(1,890)	50,00(1,969)
26	2065-2261	50,00(1,969)	52,00(2,047)
27	2065-2271	52,00(2,047)	54,00(2,126)
28	2065-2281	54,00(2,126)	56,00(2,205)
29	2065-2291	56,00(2,205)	58,00(2,283)
30	2065-2301	58,00(2,283)	60,00(2,362)