

DUAL ROW CRIMP TYPE SOCKET



2067 SERIES. 2.00mm(0.079"). Crimp Type Socket

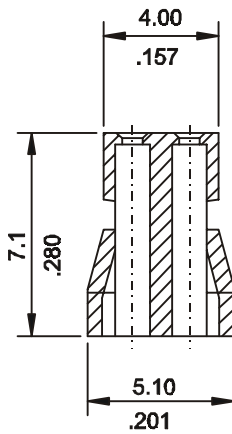
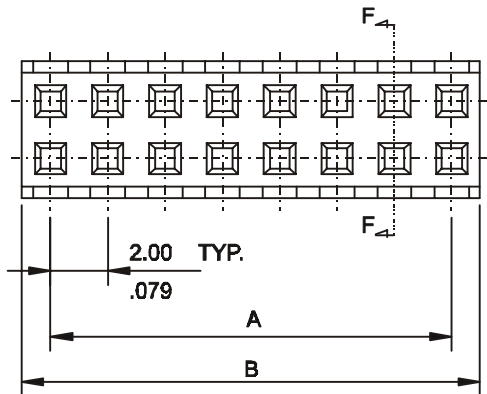
Features

- Available in 4 through 60 circuits
- Material: Glass filled polyester UL 94V-0
- Accepts 2066 crimp terminal
- Mates with 2.00mm(0.079") dual row headers with 0.50mm square pin
- Low profile

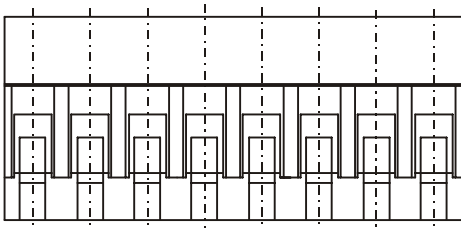
Dimensional Information

Ordering and Dimensional Information

Unit: $\frac{\text{mm.}}{\text{Inch.}}$



SEC. F-F



Circuit Size	Part Number	Dimensions	
		A	B
04	2067-2041	2,00(0,079)	4,00(0,157)
06	2067- 2061	4,00(0,157)	6,00(0,236)
08	2067- 2081	6,00(0,236)	8,00(0,315)
10	2067- 2101	8,00(0,315)	10,00(0,394)
12	2067- 2121	10,00(0,394)	12,00(0,472)
14	2067- 2141	12,00(0,472)	14,00(0,551)
16	2067- 2161	14,00(0,551)	16,00(0,630)
18	2067- 2181	16,00(0,630)	18,00(0,709)
20	2067- 2201	18,00(0,709)	20,00(0,787)
22	2067- 2221	20,00(0,787)	22,00(0,866)
24	2067- 2241	22,00(0,866)	24,00(0,945)
26	2067- 2261	24,00(0,945)	26,00(1,024)
28	2067- 2281	26,00(1,024)	28,00(1,102)
30	2067- 2301	28,00(1,102)	30,00(1,181)
32	2067- 2321	30,00(1,181)	32,00(1,260)
34	2067- 2341	32,00(1,260)	34,00(1,339)
36	2067- 2361	34,00(1,339)	36,00(1,417)
38	2067- 2381	36,00(1,417)	38,00(1,496)
40	2067- 2401	38,00(1,496)	40,00(1,575)
42	2067- 2421	40,00(1,575)	42,00(1,654)
44	2067- 2441	42,00(1,654)	44,00(1,732)
46	2067- 2461	44,00(1,732)	46,00(1,811)
48	2067- 2481	46,00(1,811)	48,00(1,890)
50	2067- 2501	48,00(1,890)	50,00(1,969)
52	2067- 2521	50,00(1,969)	52,00(2,047)
54	2067- 2541	52,00(2,047)	54,00(2,126)
56	2067- 2561	54,00(2,126)	56,00(2,205)
58	2067- 2581	56,00(2,205)	58,00(2,283)
60	2067- 2601	58,00(2,283)	60,00(2,362)