

S/ ROW POLARISING STRAIGHT HEADER

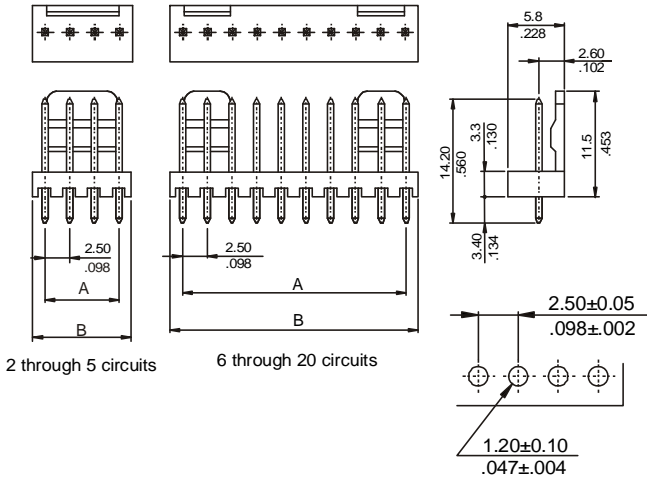


2431 SERIES. 2.50mm(0.098"). For PCB Solder

Features

- Available in 2 through 20 circuits
- Mates with 2430 Series
- Insulator Material: Nylon 6/6 UL94V-0
- 0.64mm(0.025") square pin in tinned brass
- Recommended hole for PCB: 1.20mm diameter
- With polarisation and locking ramp
- Colour: Natural

Dimensional Information



RECOMMENDED HOLE PATTERN

Ordering and Dimensional Information

Circuit Size	Part Number	Dimensions	
		A	B
02	2431-2021	2,50(0,098)	5,00(0,197)
03	2431-2031	5,00(0,197)	7,50(0,295)
04	2431-2041	7,50(0,295)	10,00(0,394)
05	2431-2051	10,00(0,394)	12,50(0,492)
06	2431-2061	12,50(0,492)	15,00(0,591)
07	2431-2071	15,00(0,591)	17,50(0,689)
08	2431-2081	17,50(0,689)	20,00(0,787)
09	2431-2091	20,00(0,787)	22,50(0,886)
10	2431-2101	22,50(0,886)	25,00(0,984)
11	2431-2111	25,00(0,984)	27,50(1,083)
12	2431-2121	27,50(1,083)	30,00(1,181)
13	2431-2131	30,00(1,181)	32,50(1,280)
14	2431-2141	32,50(1,280)	35,00(1,378)
15	2431-2151	35,00(1,378)	37,50(1,476)
16	2431-2161	37,50(1,476)	40,00(1,575)
17	2431-2171	40,00(1,575)	42,50(1,673)
18	2431-2181	42,50(1,673)	45,00(1,772)
19	2431-2191	45,00(1,772)	47,50(1,870)
20	2431-2201	47,50(1,870)	50,00(1,969)