

DUAL ROW PCB SOCKET

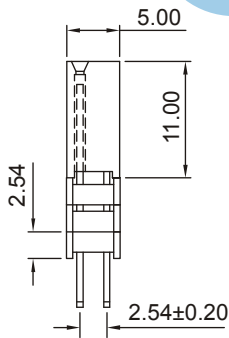
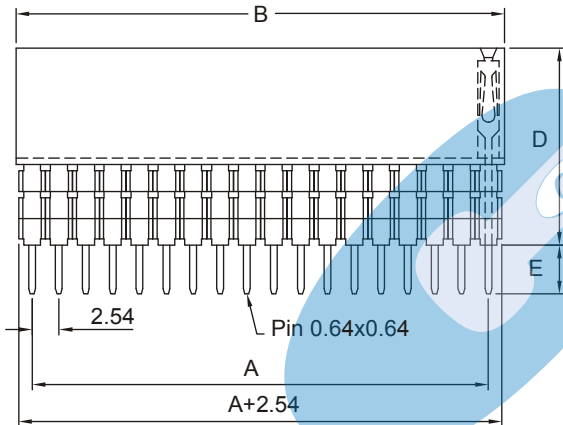
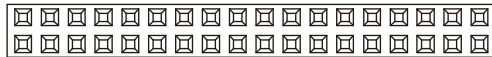
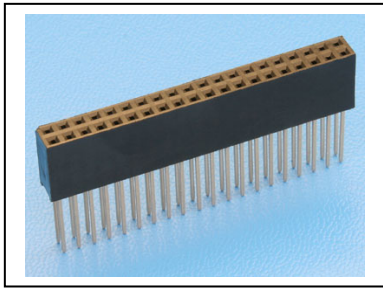


5552 SERIE. 2.54 x 2.54 mm. (0.100 X 0.100"). For PCB solder

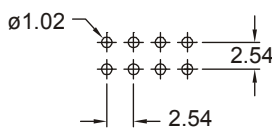
Features

- Available in 4 through 80 circuits
- Insulator material: PBT UL 94V-0
- Mates with dual row header 2.54 mm.
- Phosphor bronze terminal with different plating
- Accepts 0.64 mm square pin
- High reliability contact structure provides normal insertion force after repeated cycles
- Different pin lengths

Dimensional information



RECOMMENDED HOLE PATTERN



Ordering and Dimensional Information

Circuit Size	Part Number	Dimensions	
		A	B
04	5552-T04C	2,54(0,100)	5,58(0,220)
06	5552-T06C	5,08(0,200)	8,12(0,320)
08	5552-T08 C	7,62(0,300)	10,66(0,420)
10	5552-T10C	10,16(0,400)	13,20(0,520)
12	5552-T12C	12,70(0,500)	15,74(0,620)
14	5552-T14C	15,24(0,600)	18,28(0,720)
16	5552-T16C	17,78(0,700)	20,82(0,820)
18	5552-T18C	20,32(0,800)	23,36(0,920)
20	5552-T20C	22,86(0,900)	25,90(1,020)
22	5552-T22C	25,40(1,000)	28,44(1,120)
24	5552-T24C	27,94(1,100)	30,98(1,220)
26	5552-T26C	30,48(1,200)	33,52(1,320)
28	5552-T28C	33,02(1,300)	36,06(1,420)
30	5552-T30C	35,56(1,400)	38,60(1,520)
32	5552-T32C	38,10(1,500)	41,14(1,620)
34	5552-T34C	40,64(1,600)	43,68(1,720)
36	5552-T36C	43,18(1,700)	46,22(1,820)
38	5552-T38C	45,72(1,800)	48,76(1,920)
40	5552-T40C	48,26(1,900)	51,30(2,020)
42	5552-T42C	50,80(2,000)	53,84(2,120)
44	5552-T44C	53,34(2,100)	56,38(2,220)
46	5552-T46C	55,88(2,200)	58,92(2,320)
48	5552-T48C	58,42(2,300)	61,46(2,420)
50	5552-T50C	60,96(2,400)	64,00(2,520)
52	5552-T52C	63,50(2,500)	66,54(2,620)
54	5552-T54C	66,04(2,600)	69,08(2,720)
56	5552-T56C	68,58(2,700)	71,62(2,820)
58	5552-T58C	71,12(2,800)	74,16(2,920)
60	5552-T60C	73,66(2,900)	76,70(3,020)
62	5552-T62C	76,20(3,000)	79,24(3,120)
64	5552-T64C	78,74(3,100)	81,78(3,220)
66	5552-T66C	81,28(3,200)	84,32(3,320)
68	5552-T68C	83,82(3,300)	86,86(3,420)
70	5552-T70C	86,36(3,400)	89,40(3,520)
72	5552-T72C	88,90(3,500)	91,94(3,620)
74	5552-T74C	91,44(3,600)	94,48(3,720)
76	5552-T76C	93,98(3,700)	97,02(3,820)
78	5552-T78C	96,52(3,800)	99,56(3,920)
80	5552-T80C	99,06(3,900)	102,10(4,020)

T = Contact Plating

- T = 2. Tin-plated.
- T = 3. Gold flash over 1.27 μ Ni.
RECOMMENDED FINISH
- T = 5. 0.38 μ Gold over 1.27 μ Ni.
- T = 6. 0.75 μ Gold over 1.27 μ Ni.

Option C	Dimensions	
	D	E
1	11.00	2.30
2	11.00	7.35
3	11.00	12.20
4	13.54	4.85
5	16.08	2.30
6	18.62	4.60
7	21.16	2.30