

# 2.13mm(.078") POWER CON. CONEX-LOCK



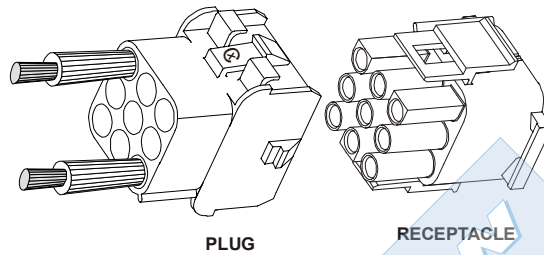
## 6760 SERIES. For Panel and free hanging mounted.

### Features

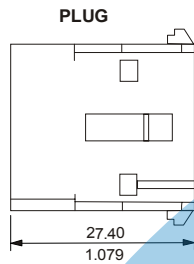
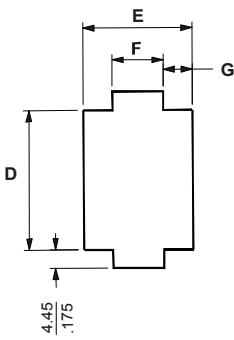
- Available in 1, 2, 3, 4, 5, 6, 8, 9, 10, 12 and 15 circuits
- Integrally moulded mounting ears
- Material: Nylon UL 94 V-2 or Nylon UL 94 V-0 available
- Colour: Natural
- 6.35mm centre spacing wire to wire connector
- Positive housing lock for secure mating retention
- Mates with 6761, 6762, 6763, 6764, 6765 and 6766 crimp terminals
- For free hanging or panel mounted
- Withstanding voltage: 1500 VAC minute
- Current rating: 11 A
- Voltage rating: 600 V

### Dimensional Information

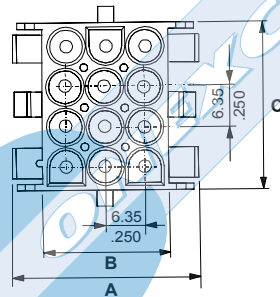
### Ordering and Dimensional Information



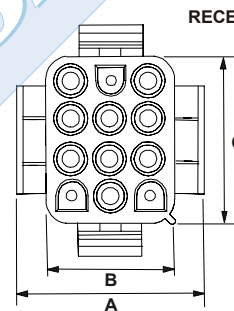
RECOMMENDED PANEL CUTOUT



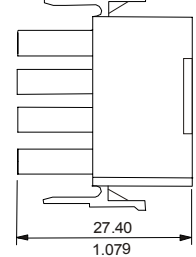
PLUG



RECEPTACLE



RECEPTACLE



### RECEPTACLE

Circuit Size	Part Number		Dimensions						
	UL94V-0	UL94V-2	A	B	C	D	E	F	G
1	6760 - 1010	6760 - 1011	-	9.65	9.65	-	-	-	-
2	6760 - 1020	6760 - 1021	15.70	7.60	13.97	-	-	-	-
3	6760 - 1030	6760 - 1031	15.70	7.60	20.30	-	-	-	-
4	6760 - 1040	6760 - 1041	15.70	7.60	26.67	-	-	-	-
5	6760 - 1050	6760 - 1051	15.70	7.60	33.02	-	-	-	-
6	6760 - 1060	6760 - 1061	28.45	20.32	13.97	-	-	-	-
8	6760 - 1080	6760 - 1081	15.70	7.60	52.07	-	-	-	-
9	6760 - 1090	6760 - 1091	28.45	20.32	20.32	-	-	-	-
10	6760 - 1100	6760 - 1101	15.70	7.60	64.77	-	-	-	-
12	6760 - 1120	6760 - 1121	28.45	20.32	26.67	-	-	-	-
15	6760 - 1150	6760 - 1151	28.45	20.32	33.02	-	-	-	-

### PLUG

Circuit Size	Part Number		Dimensions						
	UL94V-0	UL94V-2	A	B	C	D	E	F	G
1	6760 - 2010	6760 - 2011	-	7.40	7.40	-	-	-	-
2	6760 - 2020	6760 - 2021	14.70	7.60	13.97	14.35	13.46	8.64	2.41
3	6760 - 2030	6760 - 2031	14.70	7.60	20.30	20.70	13.46	8.64	2.41
4	6760 - 2040	6760 - 2041	14.70	7.60	26.67	27.05	13.46	8.64	2.41
5	6760 - 2050	6760 - 2051	14.70	7.60	33.02	33.40	13.46	8.64	2.41
6	6760 - 2060	6760 - 2061	27.40	20.32	13.97	14.35	26.16	12.19	6.99
8	6760 - 2080	6760 - 2081	14.70	7.60	52.07	52.45	13.46	8.64	2.41
9	6760 - 2090	6760 - 2091	27.40	20.32	20.32	20.70	26.16	12.19	6.99
10	6760 - 2100	6760 - 2101	14.70	7.60	64.77	65.20	13.46	3.91	4.80
12	6760 - 2120	6760 - 2121	27.40	20.32	26.67	27.05	26.16	12.19	6.99
15	6760 - 2150	6760 - 2151	27.40	20.32	33.02	33.40	26.16	12.19	6.99