

SHIELDED TOP ENTRY PCB JACK FCC-68

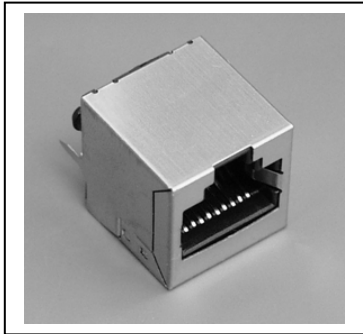


7648 SERIES. For PCB solder Shielded PCB Jack

Features

- Available in 8/8 and 10/10 circuits
- Mates with FCC-68 modular plugs
- Insulator Material: Glass filled polyester UL 94V-0
- Contact: Square 0.35 mm thickness
- Contacts: Golden phosphor bronze 0.35 mm square
- Gold plating over nickel in Contact Area.
- Tin plating over nickel in Solder Area
- Shielded Material: Bronze with nickel plated

Dimensional Information



Ordering and Dimensional Information

VERSIÓN	CÓDIGO	DIMENSIÓN A
8/8	7648 – T881	2.75 (0.108)
8/8	7648 – T882	3.25 (0.128)
10/10	7648 – T101	2.75 (0.108)

T = Contact Plating

- T = 4.6 μ" gold over 50 μ" nickel
- T = 5.15 μ" gold over 50 μ" nickel
- T = 6.30 μ" gold over 50 μ" nickel
- T = 7.50 μ" gold over 50 μ" nickel

