

# MULTI-PORT PCB JACK DOUBLE LEVEL



## 7651 SERIES. For PCB Solder. Side Entry Shielded RJ45

### Features

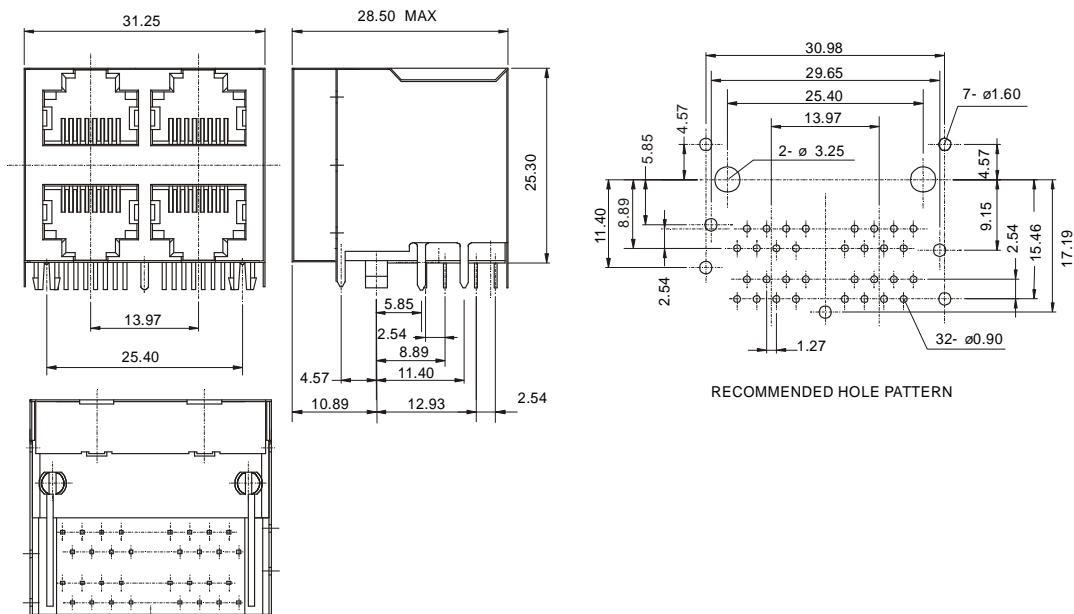
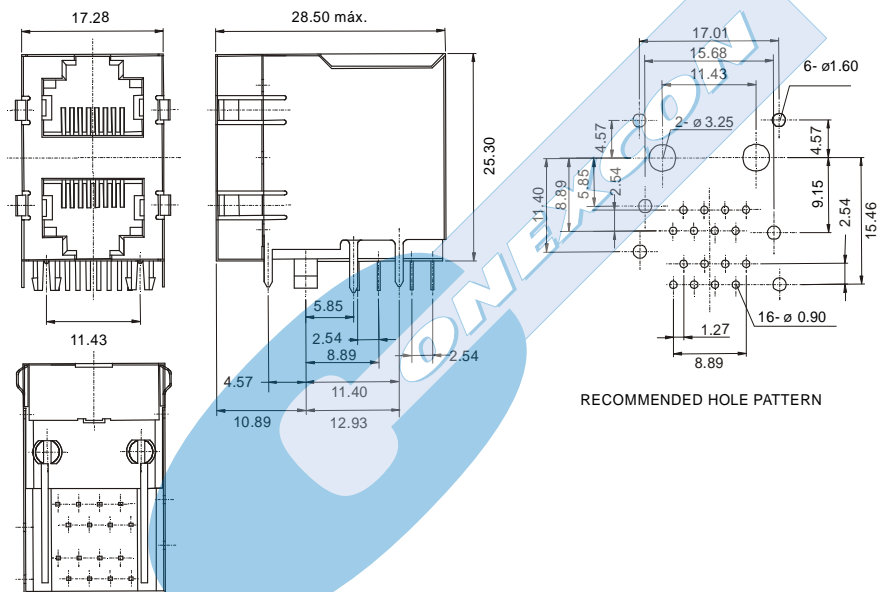
- Available in 6/6 and 8/8 circuits
- Available in 2, 4, 8, 12 and 16 Ports
- Insulator Material: Glass filled polyester UL 94V-0
- Contacts: Golden phosphor bronze of 0.35mm
- Different plating options are available
- Shielded Material: Bronze with nickel plated
- Gold plating over nickel in Contact Area
- Tin plating over nickel in Solder Area
- Mates with FCC-68 modular plugs
- With fixing post and grounding tabs according to versions

### Ordering and Dimensional Information

#### T = Contact Plating

- T = 4. 6μ" gold over 50μ" nickel
- T = 5. 15μ" gold over 50μ" nickel
- T = 6. 30μ" gold over 50μ" nickel
- T = 7. 50μ" gold over 50μ" nickel

Ports	Version 8/8		Version 6/6	
	W/O Grounding Tabs	With Grounding Tabs	W/O Grounding Tabs	With Grounding Tabs
2	7651 - T021	7651 - T022	7651 - T025	7651 - T026
4	7651 - T041	7651 - T042	7651 - T045	7651 - T046
8	7651 - T081	7651 - T082	7651 - T085	7651 - T086
12	7651 - T121	7651 - T122	7651 - T125	7651 - T126
16	7651 - T161	7651 - T162	7651 - T165	7651 - T166

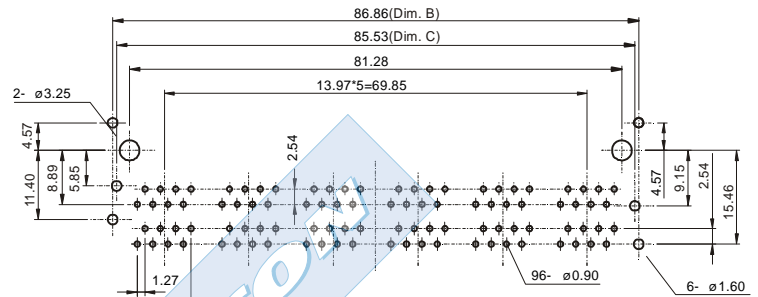
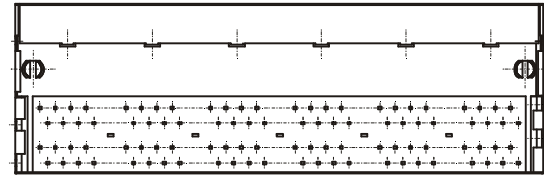
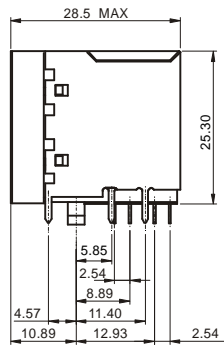
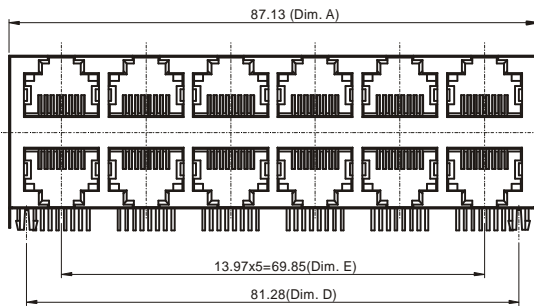


# MULTI-PORT PCB JACK DOUBLE LEVEL



## 7651 SERIES. For PCB Solder. Side Entry Shielded RJ45

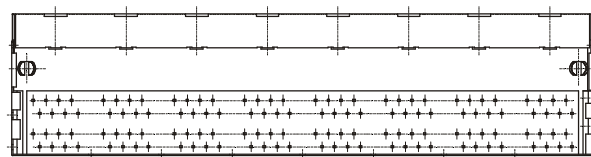
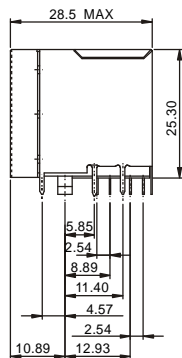
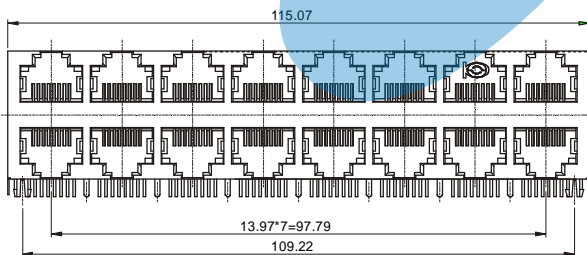
8 and 12 Ports



RECOMMENDED HOLE PATTERN

Ports	Dimensions				
	A	B	C	D	E
8	59.19(2.331)	58.92(2.320)	57.59(2.268)	53.34(2.100)	41.91(1.650)
12	87.13(3.430)	86.86(3.420)	85.53(3.368)	81.28(3.200)	69.85(2.750)

16 Ports



RECOMMENDED HOLE PATTERN

