

PLASTIC HOOD



8160 SERIES. One Touch Lock Type

Features

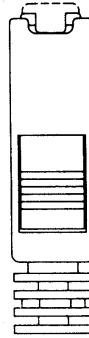
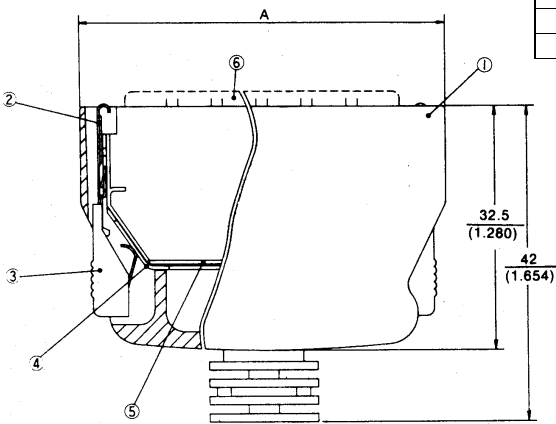
- Available for 14, 20, 26, 36, 50, 68 and 100 circuits
- Excellent EMI / ESD protection
- Reliable one-touch-lock mechanism
- Insulator Material: ABS UL 94V-0
- Latch: Stainless
- Aesthetic plastic shroud over metal EMI shield
- 180° Degree round cable exit

Dimensional Information

Ordering and Dimensional Information

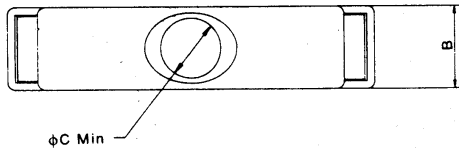
Unit: $\frac{\text{mm.}}{\text{Inch.}}$

Circuit Size	Part Number	Dimensions		
		A	B	C
14	8160 - 2014	25.79 (1.015)	6.30 (0.248)	6.10 (0.240)
20	8160 - 2020	29.70 (1.169)	11.50 (0.435)	6.50 (0.256)
26	8160 - 2026	33.40 (1.315)	12.00 (0.472)	6.90 (0.272)
36	8160 - 2036	39.80 (1.569)	11.50 (0.435)	7.50 (0.295)
50	8160 - 2050	48.70 (1.917)	12.00 (0.472)	8.70 (0.343)
68	8160 - 2068	60.10 (2.366)	11.50 (0.435)	9.50 (0.374)
100	8160 - 2100	80.40 (3.315)	12.00 (0.472)	10.70 (0.421)



This Part Number include the following items:

- 1. Plastic Hood
- 2. Spring Latch (2 pcs.)
- 3. Button (2 pcs.)
- 4. Outer Shell
- 5. Inner Shell
- 6. Connector (**Not included in the code**)



100 Contacts Version

