

# 1.778mm(.070") DIP IC SOCKET



## 8305 SERIES. Dual In Line

### Features

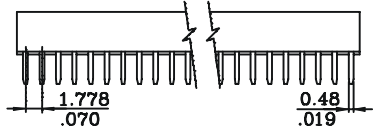
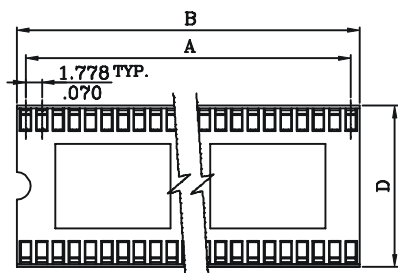
- Available in 16, 20, 22, 24, 28, 30, 32, 40, 42, 48, 52, 56 and 64 circuits
- Dual contact terminal in phosphor bronze tin plated
- Insulator Material: Glass filled polyester UL 94V-0
- Anti solder wicking
- Saving on P.C.B. real estate
- Can be manually and automatically inserted
- Low profile

### Dimensional Information

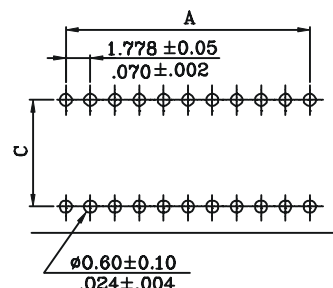
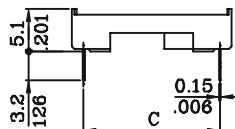
### Ordering and Dimensional Information

Circuit Size	Part Number	Dimensions			
		A	B	C	D
16	8305 - 2161	12.446 (0.490)	14.22 (0.560)	7.620 (0.300)	10.01 (0.398)
20	8305 - 2201	16.002 (0.630)	17.78 (0.700)	7.620 (0.300)	10.01 (0.398)
22	8305 - 2221	17.780 (0.700)	19.55 (0.770)	7.620 (0.300)	10.01 (0.398)
24	8305 - 2241	19.558 (0.770)	21.33 (0.840)	10.160 (0.400)	12.60 (0.496)
28	8305 - 2281	23.114 (0.910)	24.89 (0.980)	10.160 (0.400)	12.60 (0.496)
30	8305 - 2301	24.892 (0.980)	26.67 (1.050)	10.160 (0.400)	12.60 (0.496)
32	8305 - 2321	26.670 (1.050)	28.45 (1.120)	10.160 (0.400)	12.60 (0.496)
40	8305 - 2401	33.782 (1.330)	35.56 (1.400)	15.240 (0.600)	17.70 (0.697)
42	8305 - 2421	35.560 (1.400)	37.34 (1.470)	15.240 (0.600)	17.70 (0.697)
48	8305 - 2481	40.894 (1.610)	42.67 (1.680)	15.240 (0.600)	17.70 (0.697)
52	8305 - 2521	44.450 (1.750)	46.22 (1.820)	15.240 (0.600)	17.70 (0.697)
56	8305 - 2561	48.006 (1.890)	49.78 (1.960)	15.240 (0.600)	17.70 (0.697)
64	8305 - 2641	55.118 (2.170)	56.90 (2.240)	19.050 (0.750)	21.50 (0.846)

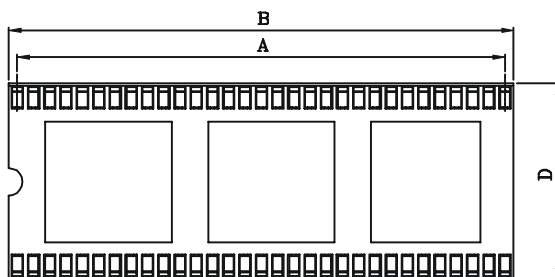
Unit:  $\frac{\text{mm.}}{\text{Inch.}}$



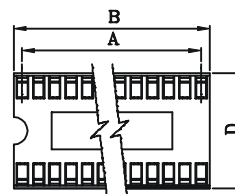
For 40, 42, 48, 52 and 56 circuits



RECOMMENDED HOLE PATTERN



For 64 circuits



For 16, 20, 22, 24, 28, 30 and 32 circuits