

DUAL IN LINE ZIP SOCKET

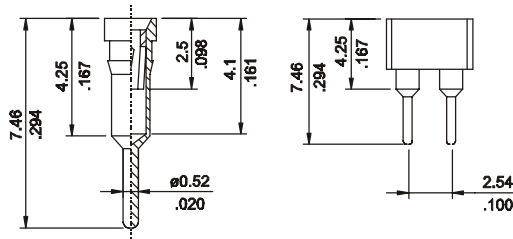
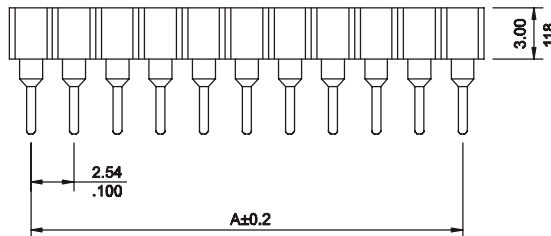
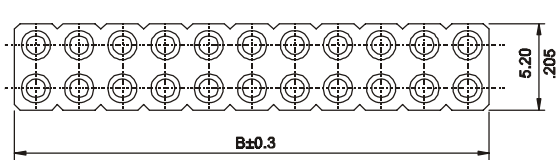


8341 SERIES. 2.54mm(0.100"). For PCB Solder

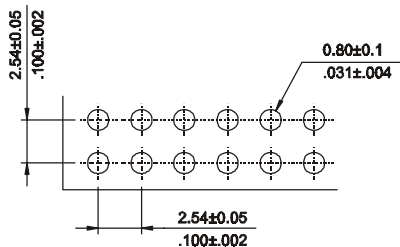
Features

- Available in 4 through 80 circuits
- Insulation Material: PPS UL 94V-0
- Contact Material: Gold plated beryllium copper
- Sleeve Material: Tin lead plated copper alloy
- High reliability turned terminal with multiple finger contact
- Seal and prevent flux wicking
- For other options consult the Sales Office

Dimensional Information



Pin Detail



RECOMMENDED HOLE PATTERN

Unit: $\frac{\text{mm.}}{\text{Inch.}}$

Ordering and Dimensional Information

Circuit Size	Part Number	Dimension	
		A	B
04	8341-T041	2,54(0,100)	4,98(0,196)
06	8341-T061	5,08(0,200)	7,52(0,296)
08	8341-T081	7,62(0,300)	10,06(0,396)
10	8341-T101	10,16(0,400)	12,60(0,496)
12	8341-T121	12,70(0,500)	15,14(0,596)
14	8341-T141	15,24(0,600)	17,68(0,696)
16	8341-T161	17,78(0,700)	20,22(0,796)
18	8341-T181	20,32(0,800)	22,76(0,896)
20	8341-T201	22,86(0,900)	25,30(0,996)
22	8341-T221	25,40(1,000)	27,84(1,096)
24	8341-T241	27,94(1,100)	30,38(1,196)
26	8341-T261	30,48(1,200)	32,92(1,296)
28	8341-T281	33,02(1,300)	35,46(1,396)
30	8341-T301	35,56(1,400)	38,00(1,496)
32	8341-T321	38,10(1,500)	40,54(1,596)
34	8341-T341	40,64(1,600)	43,08(1,696)
36	8341-T361	43,18(1,700)	45,62(1,796)
38	8341-T381	45,72(1,800)	48,16(1,896)
40	8341-T401	48,26(1,900)	50,70(1,996)
42	8341-T421	50,80(2,000)	53,24(2,096)
44	8341-T441	53,34(2,100)	55,78(2,196)
46	8341-T461	55,88(2,200)	58,32(2,296)
48	8341-T481	58,42(2,300)	60,86(2,396)
50	8341-T501	60,96(2,400)	63,40(2,496)
52	8341-T521	63,50(2,500)	65,94(2,596)
54	8341-T541	66,04(2,600)	68,48(2,696)
56	8341-T561	68,58(2,700)	71,02(2,796)
58	8341-T581	71,12(2,800)	73,56(2,896)
60	8341-T601	73,66(2,900)	76,10(2,996)
62	8341-T621	76,20(3,000)	78,64(3,096)
64	8341-T641	78,74(3,100)	81,18(3,196)
66	8341-T661	81,28(3,200)	83,72(3,296)
68	8341-T681	83,82(3,300)	86,26(3,396)
70	8341-T701	86,36(3,400)	88,80(3,496)
72	8341-T721	88,90(3,500)	91,34(3,596)
74	8341-T741	91,44(3,600)	93,88(3,696)
76	8341-T761	93,98(3,700)	96,42(3,796)
78	8341-T781	96,52(3,800)	98,96(3,896)
80	8341-T801	99,06(3,900)	101,50(3,996)

T = Contact Plating

- T = 2. Tin plated
- T = 3. Gold flash over 50μ" nickel
- T = 4. 10μ" gold over 50μ" nickel
- T = 5. 15μ" gold over 50μ" nickel
- T = 6. 30μ" gold over 50μ" nickel

Recommended Finish