

TELEPHONE FLAT CABLE



9102 SERIES. Copper or Tinsel wire. AWG 26 (7 x 0.16).

Features

- Available in 2, 3, 4, 6, 8 and 10 circuits
- For Modular Plugs 6844, 6866, 6867, 6888 and 6890 series
- Conductor Material: In copper or tinsel with PVC jacket
- Configuration colours in attached table
- Optional: Jacket colour. (Standard Black).
For other options contact the Sales Office
- Insulation resistance: 100 MΩ/ Km.
- Dielectric withstanding: 500 VAC/ 1 min.
- Conductor resistance: 20 mΩ/ meter

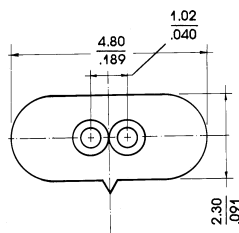
Dimensional Information

Circuit Size	Part Number Tinsel wire	Part Number copper wire	Dimension A
2	9102 - 2000	9102 - 2001	4.80 (0.189)
3	9102 - 3000	9102 - 3001	3.90 (0.154)
4	9102 - 4000	9102 - 4001	4.80 (0.189)
6	9102 - 6000	9102 - 6001	6.60 (0.260)
8	9102 - 8000	9102 - 8001	7.87 (0.310)
10	-	9102 - 1001	

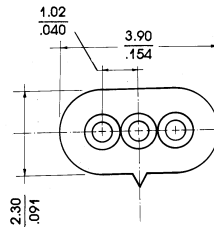
Ordering and Dimensional Information

Circuit Size	Configuration Colours
2	White - Black
3	White - Black - Green
4	Red - white - Brown - Green
6	Yellow - Red - White - Brown - Green - Blue
8	Grey - Orange - Black - Red - Green - Yellow - Blue - Brown
10	White - Violet - Brown - Blue - Yellow - Green - Red - Black - Orange - Grey

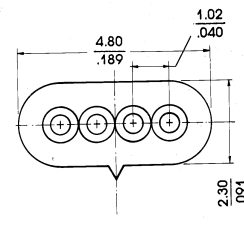
Unit: $\frac{\text{mm.}}{\text{Inch.}}$



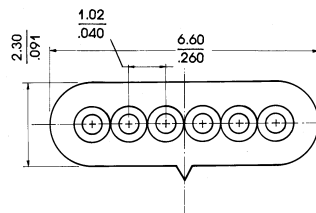
2 CIRCUITS



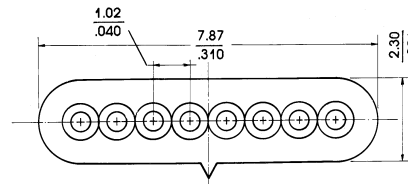
3 CIRCUITS



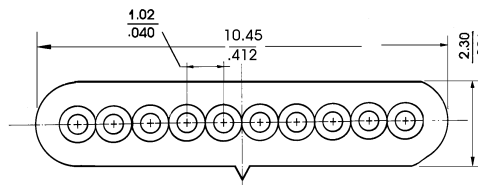
4 CIRCUITS



6 CIRCUITS



8 CIRCUITS



10 CIRCUITS

